

NOTICE: WHEN GOVERNMENT DRAWINGS, SPECIFICATIONS, OR OTHER DATA ARE USED FOR ANY PURPOSE OTHER THAN IN CONNECTION WITH A DEFINITELY RELATED GOVERNMENT PROCUREMENT OPERATION, THE UNITED STATES GOVERNMENT THEREBY INCURS NO RESPONSIBILITY FOR ANY OBLIGATION WHATSOEVER, AND THE FACT THAT THE GOVERNMENT MAY HAVE FORMULATED, FURNISHED, OR IN ANY WAY SUPPLIED THE SAID DRAWINGS, SPECIFICATIONS, OR OTHER DATA IS NOT TO BE REGARDED BY IMPLICATION OR OTHERWISE AS IN ANY MANNER LICENSING THE HOLDER OR ANY OTHER PERSON OR CORPORATION, OR CONVEYING ANY RIGHTS OR PERMISSION TO MANUFACTURE, USE, OR SELL ANY PATENTED INVENTION THAT MAY IN ANY WAY BE RELATED THERE TO.

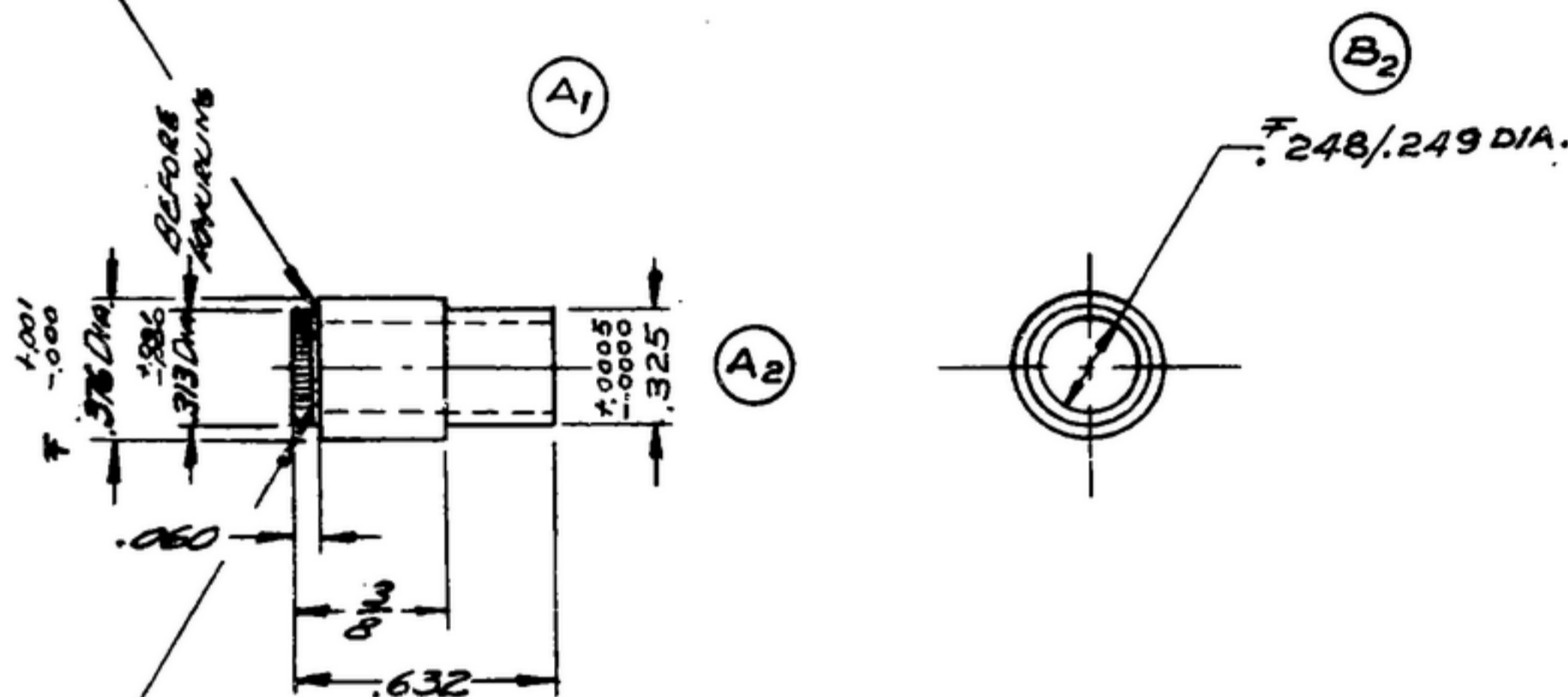
THIS DOCUMENT HAS BEEN PURCHASED BY THE GOVERNMENT AND MAY BE REPRODUCED AND USED IN CONNECTION WITH ANY GOVERNMENT PROCUREMENT OR MAINTENANCE OPERATION.

\* FOR INFORMATION ONLY. CONTRACTOR MAY AT HIS OPTION DEVIATE FROM THESE PROCESS DETAILS.

REVISIONS

SYM	DESCRIPTION	DATE	APPROVAL
<del>A<sub>2</sub></del>	<del>A<sub>1</sub> - DELETED .010 R &amp; OPTIONAL UNDERCUT; A<sub>2</sub> WAS .313 DIA.</del>	<del>10 DEC 59</del>	<del>42428-PC-59-A1-51 REV'D. PME</del>
<del>A<sub>2</sub></del>	<del>CA 85078</del>	<del>22 FEB. 61</del>	<del>42428-PC-59 REV'D. PME</del>

*.010 R. MAX. - .010 WIDE  
X .005 DEEP UNDERCUT OPTIONAL*



*35 PITCH STRAIGHT KNURL TO WITHIN  
.015 MAX. OF SHOULDER  
B<sub>1</sub> .318/.320 DIA. AFTER KNURLING*

*CRCS, COMP. 3035, COND. B, SURFACE COND. d,  
PER SPEC MIL-57720.*

NOTES:  
1. ECCENTRICITY BETWEEN DIA'S MARKED  $\Phi$  MUST NOT EXCEED .002 T. I. R.

COLLINS PART NO.	ITEM	QTY	PART NO.	DESCRIPTION	MATL.	MATL. SPEC.
LIST OF MATERIAL						
COLLINS PART NO. <i>558-0567-002</i>						

DRAWN <i>RDE</i>		CHECKED <i>BG</i>		APPROVED		COLLINS-RADIO CO. CEDAR RAPIDS, IOWA <i>14214-PH-51-93</i>		<i>HUB-CAM</i>		DEPARTMENT OF THE ARMY SIGNAL CORPS ENGINEERING LABORATORIES FORT MONMOUTH NEW JERSEY  <i>5M-B-283273</i>	
UNLESS OTHERWISE SPECIFIED: DECIMAL DIMENSIONS INCLUDING HOLE SIZES MAY VARY ±.005 FRACTIONAL DIMENSIONS INCLUDING HOLE SIZES MAY VARY ±1/64 MACHINED ANGLES MAY VARY ±1° SHEARED ANGLES MAY VARY ±.25° BROKEN ANGLES MAY VARY ±1° ECCENTRICITY BETWEEN ANY DIAMETERS ON THE SAME CENTERLINE SHALL NOT EXCEED .010 TOTAL INDICATOR READING. ALL DIMENSIONS ARE FINISH DIMENSIONS INCLUDING APPLIED FINISH AND ARE GIVEN IN INCHES.						REVIEWED <i>PME</i>					
						APPROVED <i>HLV</i> <i>PME</i>					
558-0496-002		SM-GEN PART 5E0624875		DATE <i>20 FEB 58</i>		SCALE <i>2/1</i>					
COLLINS NO.		STY		NEXT ASSY		USED ON		APPLICATION			